



Q MAKS

Haniya's

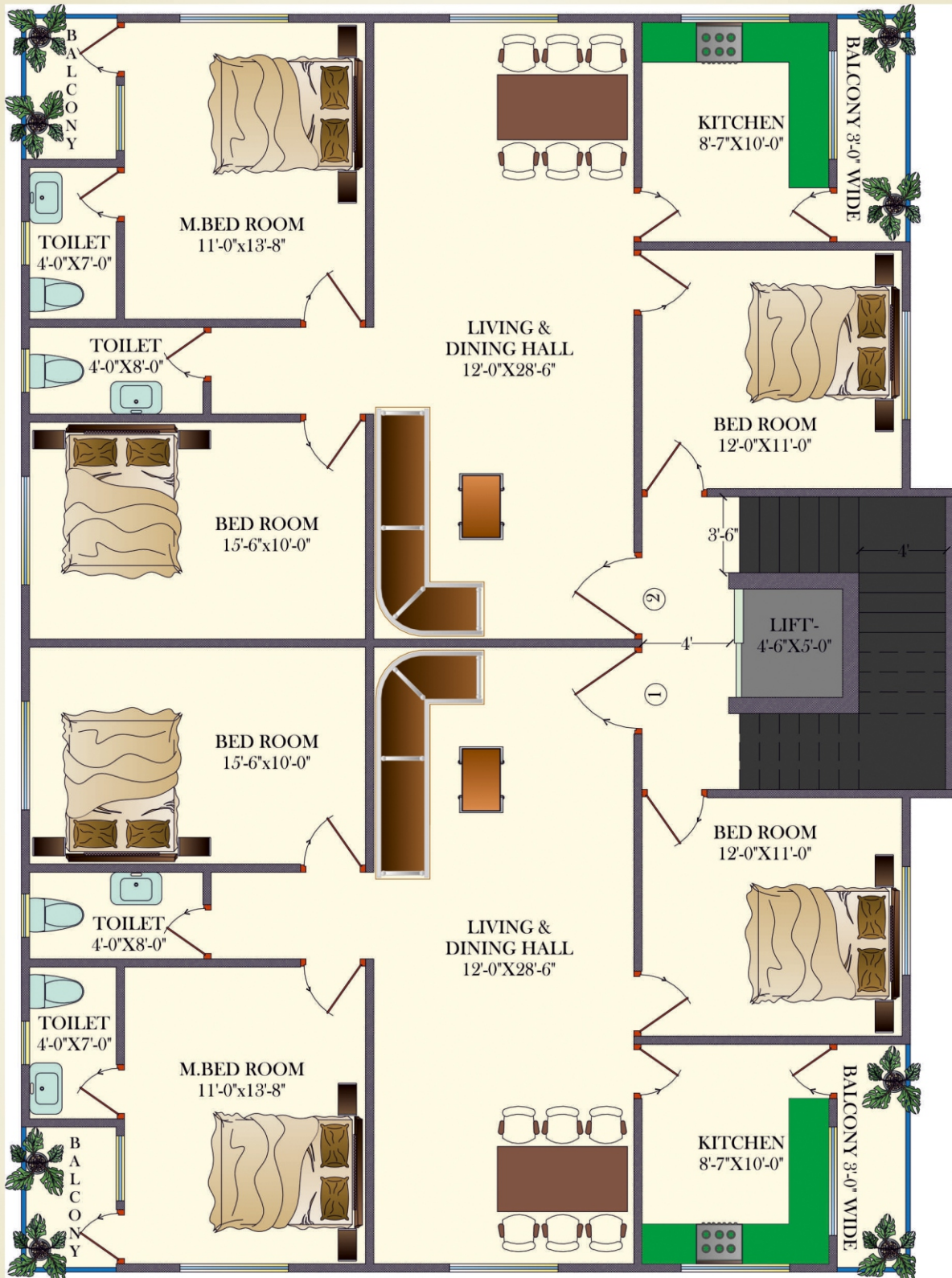
RESIDENCY

*Happiness for
life time
Luxurious Living*

@ AL-KAREEM COLONY, MD LINES

TYPICAL FLOOR PLAN Furniture Layout Plan

Fully Ventilated 3BHK Deluxe Flats

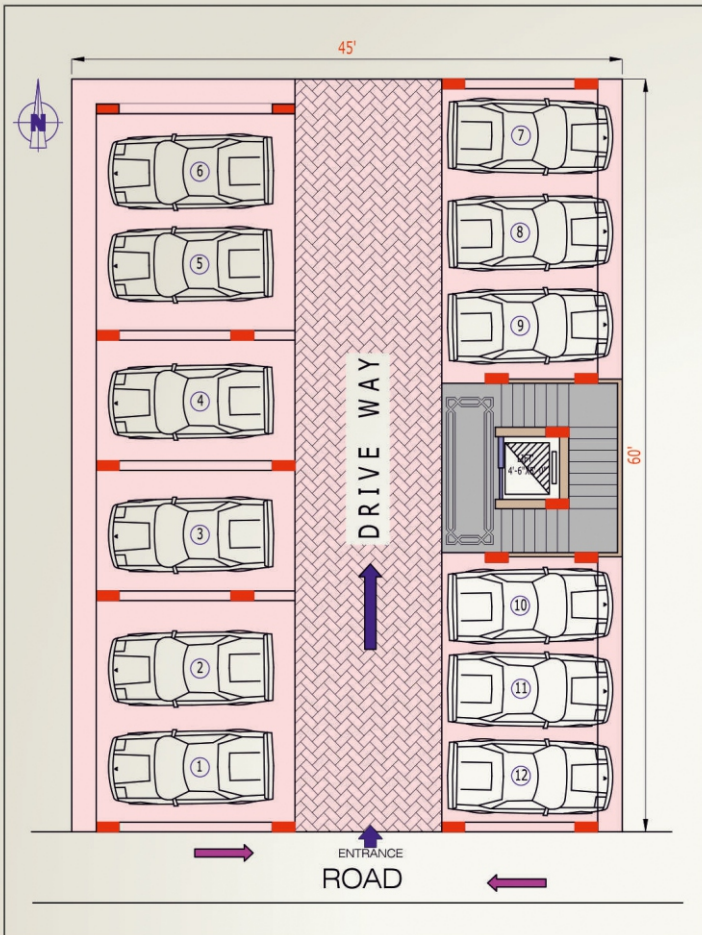


Area Statement 3 BHK Deluxe Flats

FLAT - 1	1350 sft.
FLAT - 2	1353 sft.



Parking Plan



Specifications

Structure : RCC Frames Structures will be as per the provided design in using TMT-550 Steel

Walls : Best Quality Fly ash Bricks

Ceiling : Gypsum Ceiling in Hall and bedrooms

Plastering : External & Internal Plastering with C.M in two Coats with sponge finishing

Flooring : First Class Vitrified Tiles 24" X 24" with Skirting

Bathrooms : Each Toilet Ceramic Tiles Flooring Designer Ceramic Tiles Dado up to Door Height European / Indian type water closet. Provision for Geyser will be given

Doors : Main Door Teakwood Frame and Teakwood Shutter with Polish Internal Doors Frames Teakwood with Molding Doors

Windows : 3 Track Aluminum Frames with Iron Safety Grills

Kitchen : Granite Plate form with Satinless Steel Sink

Painting : Two Coats Birla putty with Acrylic Plastic Emulsion

Lift : 6 Passenger Standard Lift

Back up : Backup for Lift & Common Lights

NOTE: Car Parking & Amenities Extra Cost, 24x7 CCTV and many more Facilities





Location Map

Al-Kareem Colony, Mohammedi Lines, Tolichowki, Hyderabad.



NOTE: This brochure is only a conceptual presentation of the project and not a legal offering. The promoters reserve the right to make changes in plans, specifications and elevation as deemed fit.

Our Previous Projects at:

**Ramkoti | Bahadurpura | Saleem Nagar
Tolichowki, Golden Sand Colony | S.A. Colony**



Q MAKS BUILDERS & DEVELOPERS

Plot No. F1, Golden Sand Colony,
Tolichowki, Hyderabad.

Contact: 9959718786